



# THE PALLAS POST

## Tim Pallas MP

State Labor Member for Werribee District



### Level Crossing Removal Update

## REMOVING WERRIBEE DISTRICT'S LEVEL CROSSINGS

The Andrews Government is removing dangerous and congested level crossings, including here in the Werribee District.

Wyndham will soon be free of all level crossings with all three gone for good in 2022, providing a safer and faster commute for the local community.

Here's an update from the Level Crossing Removal Project (LXRP) team:

### WERRIBEE STREET, WERRIBEE

Works are progressing to remove the Werribee Street level crossing, with the team working round the clock until late 2020 to build the new rail bridge.

A temporary freight track was recently installed, which will help keep Victoria's freight trains running while construction continues.

Excavation and foundation (piling) works continue, which will support the columns and structures that will be installed during the next steps of construction.

Once complete, the new rail bridge will allow for future expansion of the rail line. A new open space under the rail line will also be created for the whole community to enjoy.



### CHERRY STREET, WERRIBEE

Major construction is well underway to remove the Cherry Street level crossing, as the new road bridge starts to take shape.

The LXRP team recently installed 14 bridge beams, weighing over 1150 tonnes to create the foundations of the new road bridge structure.

Works to install the new pedestrian underpass have also begun.

The well-lit pedestrian underpass will form a safe connection for pedestrians and cyclists through to either side of the rail line, making it easier to get around the area and to local shops.

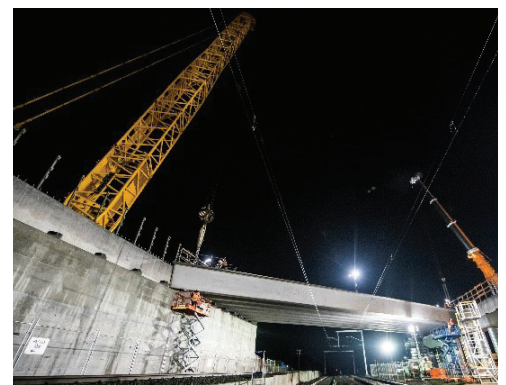


### OLD GEELONG ROAD, HOPPERS CROSSING

At Old Geelong Road, the team will continue to prepare the area for works once restrictions in place to suppress coronavirus ease, with major construction set to begin in the coming months.

This crossing will be removed by building a new road bridge over the rail line, directly connecting Princes Highway to Old Geelong Road.

The bridge will be constructed to the east of the current level crossing, which will be closed to traffic, also making way for new landscaped areas. Locals will be able to access Hoppers Crossing Station via a new pedestrian overpass.



*For information and to sign up for email and text message updates on the projects, visit [levelcrossings.vic.gov.au/subscribe](https://levelcrossings.vic.gov.au/subscribe) or text "Cherry" or "Werribee" to 0438 479 376.*

Top to bottom: Recent works at Werribee Street within the rail corridor, Cherry Street pedestrian underpass construction, recent road bridge beam installation.

## UPGRADING THE DUNCANS ROAD INTERCHANGE IN WERRIBEE



As part of the Andrews Government's \$1.8 billion Western Roads Upgrades, works are progressing to complete the **Duncans Road Interchange**.

The Major Roads Project Victoria (MRPV) team will soon complete the new Geelong-bound freeway entry ramp and the Melbourne-bound freeway exit ramp, install new traffic lights and light poles, lay the final layer of asphalt on new roads, and open additional lanes on the new Duncans Road bridge.

Watch the video of how we demolished the old Duncans Rd bridge at [roadprojects.vic.gov.au/projects/westernroadsupgrade/duncans-road-interchange](https://roadprojects.vic.gov.au/projects/westernroadsupgrade/duncans-road-interchange).

*Information about disruptions related to major construction works can be found at [bigbuild.vic.gov.au/disruptions](https://bigbuild.vic.gov.au/disruptions).*

## BUILDING THE EDUCATION STATE IN THE WERRIBEE DISTRICT

The Andrews Government is building the Education State, by constructing new schools and upgrading existing facilities, so that every student can access a great and quality education - including here in the Werribee District.

We're building a new primary school in Wyndham Vale. Construction continues at **Wollahra Primary School** (interim name) and **2021 enrolments are now open!** Visit the school's facebook page for more information.

The Andrews Government opened **Riverwalk Primary School** in 2020, and in addition to new primary schools, we also recently secured a 8.4 hectare site for a **future secondary school right here in Werribee's Harpley Estate!**

Through the 2020-21 Bushfire Preparedness (Vegetation) Program and Planned Maintenance Program, **Werribee Primary School, Werribee Secondary College, Wyndham Park Primary School, and Wyndham Vale Primary School** will share in more than \$75,000 to address various high priority maintenance works.

Earlier this year, **Iramoo Primary School** and **Manorvale Primary School** also shared in \$40,000 funding for high priority maintenance works.



Construction at Wollahra Primary School (interim name).

## TRANSFORMING THE WERRIBEE WATER TOWER



The Werribee Water Tower before and during the transformation.

The revitalisation of the historical Water Tower on Tower Road in Werribee is now complete!

Thanks to funding from the Andrews Government, and lead by Arts Assist Wyndham, the water tower has been transformed with a giant mural.

The artwork highlights the tower's historical significance to the local community, giving new life to a local landmark.



Completed mural on the Water Tower. Photograph by James Pipino.

## Tim Pallas MP

State Labor Member for Werribee District

2/56-58 Watton Street, Werribee **web** [timpallas.com.au](https://timpallas.com.au) **email** [tim.pallas@parliament.vic.gov.au](mailto:tim.pallas@parliament.vic.gov.au)  
**tel** 9741 1133 **f** [facebook.com/timpallasmp](https://facebook.com/timpallasmp) **t** [@timpallasmp](https://twitter.com/timpallasmp)

Authorised by T Pallas, 2/56-58 Watton St Werribee 3030. Printed by Currency Print, 207 Errol St, North Melbourne, 3051. Funded from Parliamentary Budget.